

CHICAGO FAUCETS
a Geberit company

2100 South Clearwater Drive
Des Plaines, IL 60018
Phone: 847-803-5000
Fax: 847-803-5454
www.chicagofaucets.com

REPAIR PARTS

FITTING NO.

W4D

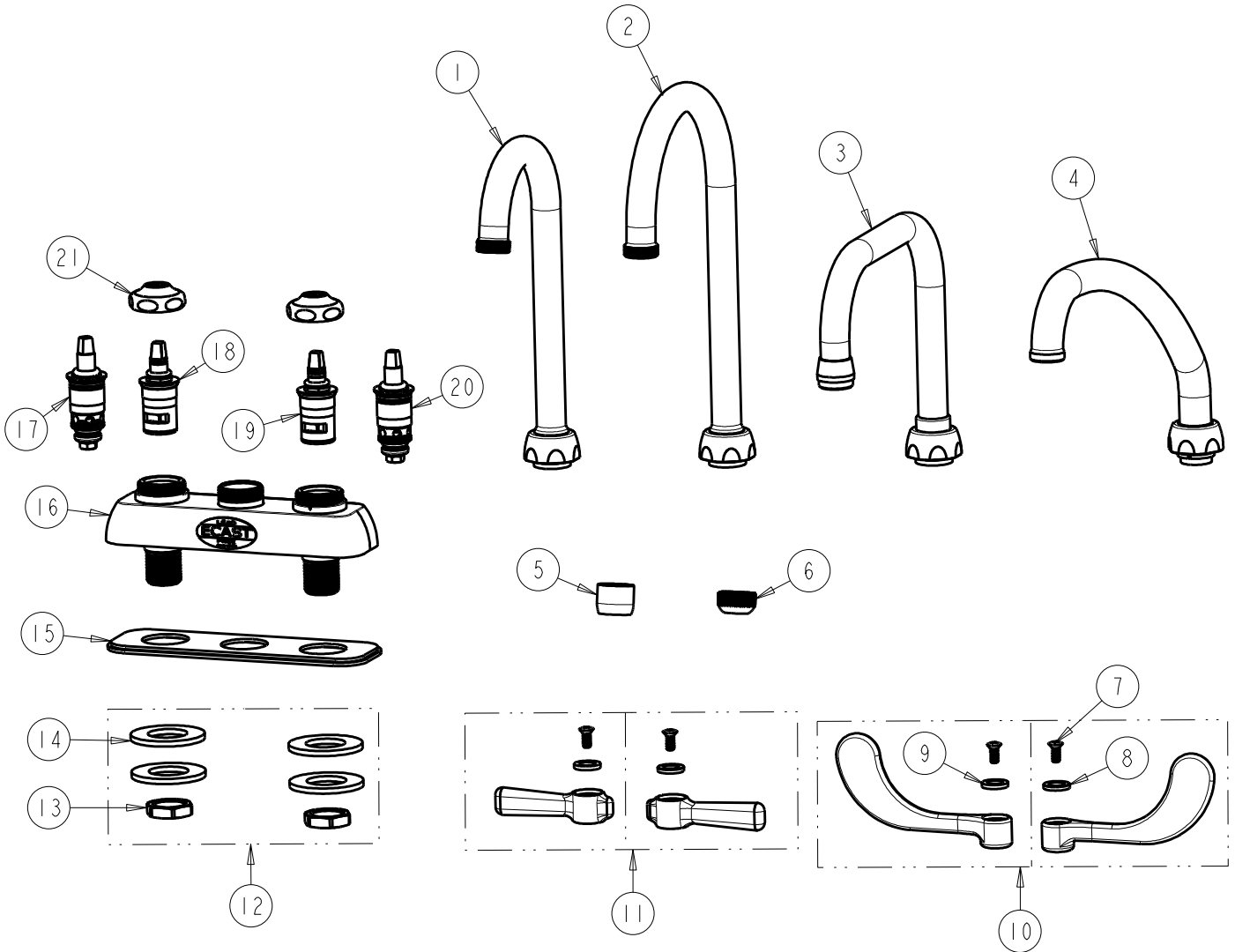
SUBMITTED MODEL NO.

ITEM NO.

BY: JAR DATE: 08-30-12

CHK: *[Signature]* REV:

FOR TECHNICAL ASSISTANCE
1-800-TEC-TRUE (1-800-832-8783)



ITEM	PART NO.	DESCRIPTION	ITEM	PART NO.	DESCRIPTION
1	GN1AJKABCP	SPOUT	12	520-PPJKNF	KIT, HARDWARE
2	GN2AJKABCP	GN SPOUT PLAIN END	13	49-004JKRBF	LOCKNUT
3	DB6AJKABCP	SPOUT	14	521-005JKNF	STEEL WASHER
4	L9LESSE3JKCP	SPOUT	15	520-002JKNF	4" DECK GASKET
5	E35JKCP	SOFTFLO AERATOR 1.5 GPM	16	----	NOT SOLD SEPARATELY
6	E1JKABRCF	QUIXTOP OUTLET	17	1-100XTJKABNF	QUATURN CARTRIDGE (LH)
7	420-010JKRCF	SCREW, 10-32 UNC PH 1/2	18	1-100XKJKABNF	LH CERAMIC CARTRIDGE
8	633-123JKNF	INDEX BUTTON (BLUE)	19	1-099XKJKABNF	RH CERAMIC CARTRIDGE
9	633-023JKNF	INDEX BUTTON (RED)	20	1-099XTJKABNF	QUATURN CARTRIDGE (RH)
10	317-PRJKCP	HANDLE, 4" WRISTBLADE (PAIR)	21	1-214JKCP	CAP NUT
11	369-PRJKCP	LEVER HANDLE ASSEMBLY (PAIR)			